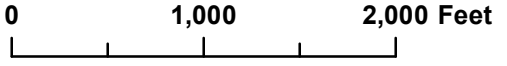


- Study Area
- Preliminary Construction Limits
- Data Points (DP)
- OHWM
- Emergent Wetland
- Open Water
- Shrub Wetland

**Figure 5a:
Delineation Map - East**



Date: October, 2020

Port of Catoosa Inola Industrial Rail Facility
Rogers County, Oklahoma
Section: 15, 17, 18, and 19
Township: 19 North, Range: 17 East
Aerial Source: NAIP 2019 Imagery: Rogers County



- Study Area
- Preliminary Construction Limits
- Data Points (DP)
- OHWM
- Emergent Wetland
- Open Water
- Shrub Wetland

**Figure 5b:
Delineation Map - Central**



0 1,000 2,000 Feet



EXPERIENCE | Transportation

Date: October, 2020

Port of Catoosa Inola Industrial Rail Facility

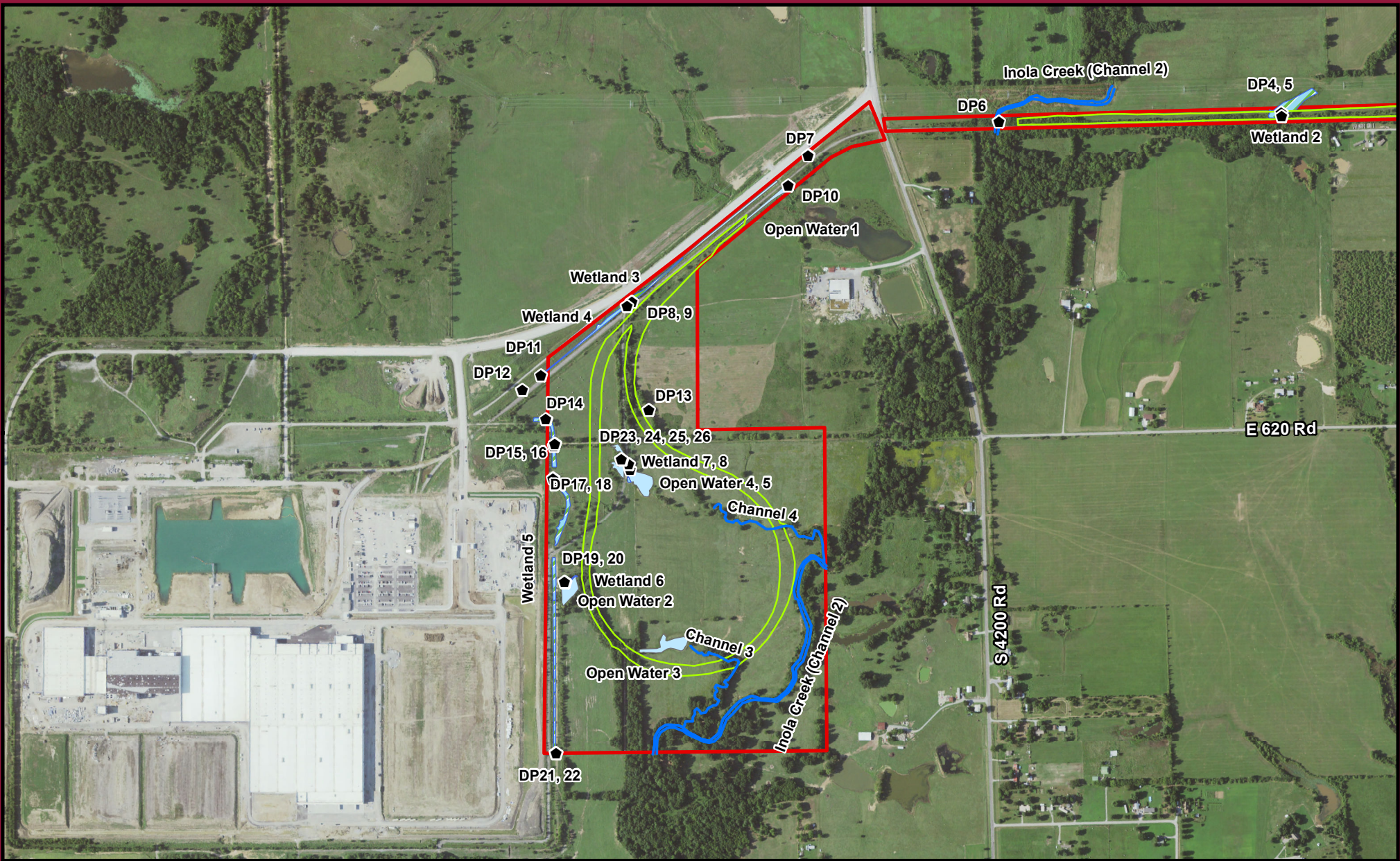
Rogers County, Oklahoma

Section: 15, 17, 18, and 19

Township: 19 North, Range: 17 East

Aerial Source:

NAIP 2019 Imagery: Rogers County



- Study Area
- Preliminary Construction Limits
- Data Points (DP)
- OHWM
- Emergent Wetland
- Open Water
- Shrub Wetland

**Figure 5c:
Delineation Map - West**



0 1,000 2,000 Feet



EXPERIENCE | Transportation

Date: October, 2020

Port of Catoosa Inola Industrial Rail Facility

Rogers County, Oklahoma

Section: 15, 17, 18, and 19

Township: 19 North, Range: 17 East

Aerial Source:

NAIP 2019 Imagery: Rogers County